



ALZAI health

**Predictive Alzheimer's
Risk Screening through
the Power of AI**

ALZAI HEALTH CORPORATION | OCTOBER 2025



Legal Disclaimer

THIS MANAGEMENT PRESENTATION (The "presentation") was prepared as a summary overview only of the current affairs of Alzai Health Corp. ("Alzai Health" or the "Company") and was not prepared for the purpose of assisting prospective investors in making a decision to invest in Alzai Health. Information disclosed in this presentation is current as of October 2025, except as otherwise provided herein, and Alzai Health does not undertake or agree to update this presentation after the date hereof. All information contained in this presentation is derived solely from management of Alzai Health and otherwise publicly available third-party information that has not been independently verified by the company. Further, the company does not make any representation as to the completeness, truth or accuracy of the information contained in this presentation. The company expressly warns readers not to rely on the information contained herein as advice (legal, financial, tax or otherwise) to current or potential investors. Accordingly, any use of this information is at your risk and without liability to the company. This presentation does not constitute and should not be construed as either a public or private offer to sell or the solicitation of an offer to purchase securities in the capital stock of Alzai Health in any jurisdiction in which such offer, solicitation or sale would be unlawful. Each prospective investor should contact his/her or its own legal adviser, independent financial adviser or tax adviser for legal, financial or tax advice regarding investment related decisions respecting the securities of the company. No person has been authorized to give any information or make any representation other than those contained in this presentation and, if given and/or made, such information or representations must not be relied upon as having been so authorized.

FORWARD-LOOKING INFORMATION This Presentation contains certain statements, which may constitute "forward-looking information" within the meaning of Canadian securities law requirements. Forward-looking information involves statements that are not based on historical information but rather relate to future operations, strategies, financial results or other developments. Forward-looking information is necessarily based upon estimates and assumptions, which are inherently subject to significant business, economic and competitive uncertainties and contingencies, many of which are beyond Alzai Health's control and many of which, regarding future business decisions, are subject to change. These uncertainties and contingencies can affect actual results and could cause actual results to differ materially from those expressed in any forward-looking statements made by or on Alzai Health's behalf. Although Alzai Health has attempted to identify important factors that could cause actual actions, events or results to differ materially from those described in forward-looking information, there may be other factors that cause actions, events or results to differ from those anticipated, estimated or intended. All factors should be considered carefully, and readers should not place undue reliance on Alzai Health's forward-looking information. Examples of such forward-looking information within this Presentation include statements relating to future capital expenditures, anticipated increase in incidence of Alzheimer's disease, success of research activities, and government regulations. Generally, forward-looking information can be identified by the use of forward-looking terminology such as "expects," "estimates," "anticipates," or variations of such words and phrases (including negative and grammatical variations) or statements that certain actions, events or results "may," "could," "might" or "occur."

FORWARD-LOOKING STATEMENTS are not guarantees of future performance and involve risks, uncertainties and assumptions, which are difficult to predict. Assumptions underlying Alzai Health's expectations regarding forward-looking statements or information contained in this Presentation include, among others, Alzai Health's ability to

comply with applicable governmental regulations and standards, the company's ability to commercialize its risk-screening solution, the company's ability to protect its proprietary AI, the company's risk screening tool and the impact on early diagnosis of Alzheimer's disease, its success in implementing its strategies, achieving its business objectives, the ability to raise sufficient funds from equity financings in the future to support its operations, and general business and economic conditions. The foregoing list of assumptions is not exhaustive. Prospective investors reading this Presentation are cautioned that forward-looking statements are only predictions, and that Alzai Health's actual future results or performance are subject to certain risks and uncertainties including: risks related to risks related to any history of losses, which may continue in the future; risks related to increased competition and uncertainty related to additional financing that could adversely affect its ability to attract necessary capital funding, or risks related to its officers and directors becoming associated with other Artificial Intelligence (AI) or related machine learning data focused companies, which may give rise to conflicts of interest; uncertainty and volatility related to stock market prices and conditions; further equity financing(s), which may substantially dilute the interests of Alzai Health's shareholders; risks relating to its operations; dependence on general economic, market or business conditions; changes in business strategies; and changes in laws and regulations.

FORWARD-LOOKING ASSUMPTIONS/ESTIMATES in this Presentation reflects Alzai Health's current views with respect to future events and are necessarily based upon a number of assumptions and estimates that, while considered reasonable by Alzai Health, are inherently subject to significant business, economic, competitive, political and social uncertainties and contingencies. Many factors, both known and unknown, could cause actual results, performance or achievements to be materially different from the results, performance or achievements that are or may be expressed or implied by such forward-looking information contained in this Presentation and documents incorporated by reference, and we have made assumptions based on or related to many of these factors. Such factors include, without limitation: fluctuations in technology, software and health sciences markets, any future restrictions in the jurisdictions in which Alzai Health operates; laws and regulations governing our operation, research and development activities; its ability to obtain or renew approvals for the operation and expansion of its existing operations and for the development and commencement of new operations; fluctuations in currency markets (such as the US dollar versus the Canadian dollar); and its potential to impact our ability to meet its financial obligations; Alzai Health's ability to recruit and retain qualified personnel; employee relations; disputes as to the validity of scientific and proprietary titles or rights; the effectiveness of its internal control over financial reporting; claims and legal proceedings arising in the ordinary course of business activities.

Forward-looking information is made based on management's beliefs, estimates and opinions and are given only as of the date of this Presentation. Alzai Health undertakes no obligation to update forward-looking information if these beliefs, estimates and opinions or other circumstances should change, except as may be required by applicable law. Current and potential investors should not place undue reliance on forward-looking statements due to the inherent uncertainty therein. All forward-looking information is expressly qualified in its entirety by this cautionary statement.

Overview

Meeting the Need to Enable Early Alzheimer's Detection, Intervention, and Prevention

Research studies on ALZAI demonstrated non-invasive screening for the risk of being diagnosed with Alzheimer's disease with up to 80% sensitivity.¹

- **AI-driven Alzheimer's risk-screening solution** using common pre-existing health data which enables population-level screening.
- **Leverages common data** available in nearly every adult's medical health record to screen for AD risk, by applying ALZAI's custom algorithms.
- **Proof of Concept** was achieved using data from 500k patients, demonstrating ALZAI's predictive value on AD diagnosis.
- **Commercial Traction** The company is now in commercialization discussions solution with leading pharma, CROs, and healthcare tech companies.
- **Strong Intellectual Property rights**, as assessed by expert legal counsel.

CRITICAL NEED: **RISK SCREENING**

- **Prevention:** Up to one-third of Alzheimer's cases can be prevented, if individuals at risk are identified early through screening.²
- **Early Detection:** Many patients remain undiagnosed until moderate or severe stages, losing valuable treatment potential and time, driving up care costs. Risk screening enables earlier diagnosis and intervention.³

1. [Predicting onset and progression of neurodegenerative diseases using blood test data and machine learning models, Line 0273, Amir Glik, Chen Hajaj, Orit Rephaeli, Anat Goldstein](#)
2. [Alzheimer's Research & Therapy volume 12, Article number: 81 \(2020\), Manuel Montero-Odasso, Zahinoor Ismail & Gill Livingston](#)
3. [Alzheimer's Association – 2025 Alzheimer's Disease Figures and Facts \("AA Report"\), page 30](#)

Highlights



Innovative, AI-driven, 100% non-invasive, low-cost Alzheimer's risk screening at population scale.

Strong IP: Expert legal counsel confirms robust intellectual property.

Data-powered uses only pre-existing data of routine demographic and standard blood panel results found in nearly every patient's medical record, analyzed with proprietary AI algorithms.

Meeting the need, While diagnostics, treatments, and prevention options grow, screening remains the critical gap that ALZAI addresses.

Flags patients at risk for being diagnosed with Alzheimer's **stratified within 1-10 years**

Alzai Risk Screening solution is designed to flag high risk patients to promote more of the right patients to move through diagnosis to treatment or prevention, **impacting both patients and healthcare systems.**

Proof of concept completed on **500,000 real-world patient records**; commercialization underway.

About Our Solution

ALZAI Health has created an innovative non-invasive risk screening solution for Alzheimer's Disease.

We aim to empower healthcare providers, payors, and clinical trial proponents with accessible, AI-powered Alzheimer's risk assessment, enabling pre-symptomatic identification & intervention.

In a perfect world, everyone over 50 would be screened for Alzheimer's Disease. ALZAI can assess risk of developing the disease, advancing pre-Alzheimer's identification to enable preventative care.

ALZAI can enable identification of people in early stages of the disease, allowing earlier diagnosis and intervention – precisely when therapies work best.

ALZAI aims to join the fight against Alzheimer's Disease.

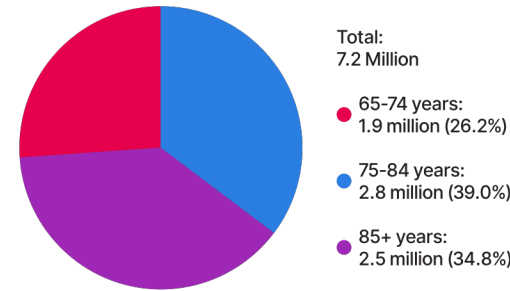


Disease Overview

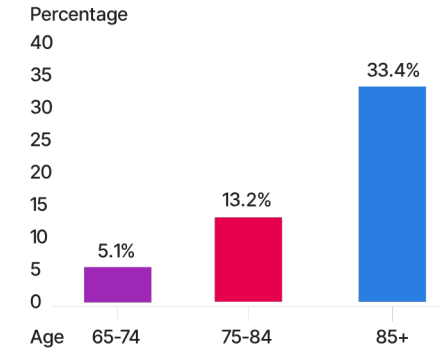
- **#1 cause of dementia** - Alzheimer's accounts for up to 80% of cases.¹
- **Rising prevalence** - 7M Americans today;² projected 13.8M by 2060.³
- **Global burden** - 50M people worldwide, expected to reach 152M by 2050.⁴
- **Deadly impact** - 7th leading cause of death in the U.S. (2024); likely underreported.⁵
- **Rapid growth** - Alzheimer's deaths increased 145% in the past 20 years.⁶

1. [Alzheimer's Association – 2025 Alzheimer's Disease Figures and Facts \("AA Report"\), page 7.](#)
2. [AA Report, page 29.](#)
3. [AA Report, page 40.](#)
4. [Alzheimer's Disease International – Numbers of People with Dementia Worldwide](#)
5. [AA Report, page 42.](#)
6. [AA Report, page 44.](#)

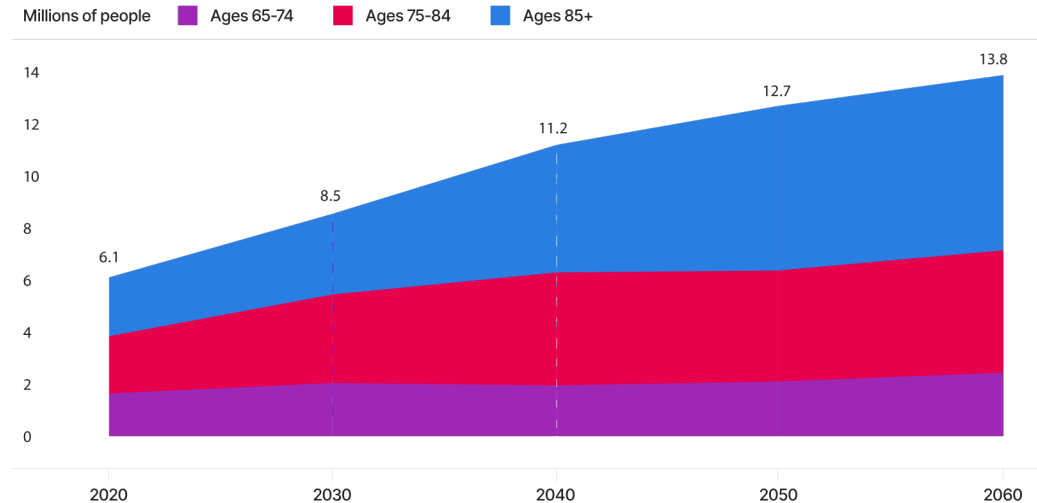
Number and Ages of People 65 or Older with Alzheimer's Dementia, 2025



Percentage of People with Alzheimer's Dementia by Age Group, 2025



Projected Number of People Age 65 and Older (Total and by Age) in the U.S. Population with Alzheimer's Dementia, 2020 to 2060



Source: Alzheimer's Association

Economic Impact

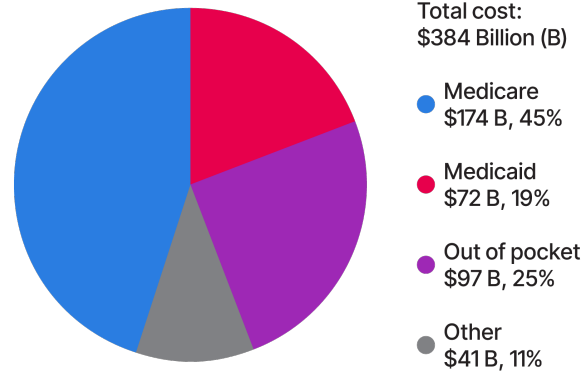
- 12M unpaid caregivers in the U.S., contributing care valued at \$413B annually.¹
- \$384B in 2025 projected dementia-related costs (healthcare, long-term care, hospice); nearly \$1T by 2050.²
- Early detection matters - could save ~\$7T in medical and long-term care costs.³

Nearly
12 Million



Americans provide unpaid care for people with Alzheimer's or other dementias

Costs of Care by Payment Source for Americans Age 65 and Older with Alzheimer's or Other Dementias, 2025



Total cost:
\$384 Billion (B)

• Medicare
\$174 B, 45%

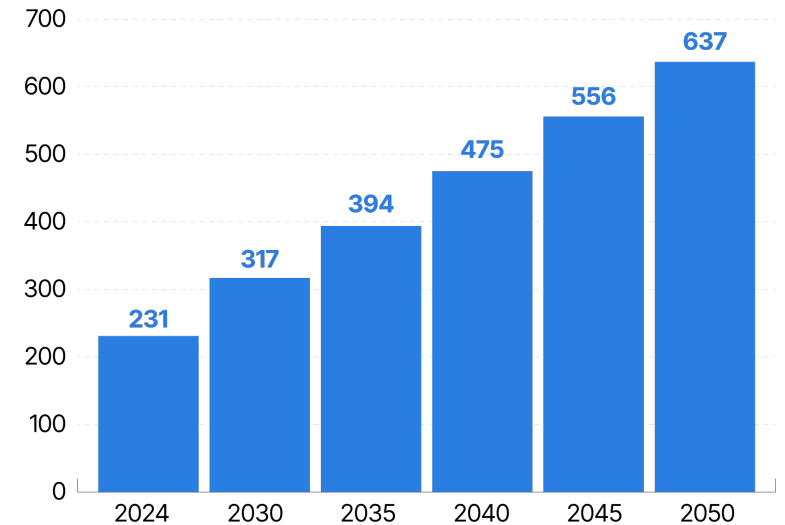
• Medicaid
\$72 B, 19%

• Out of pocket
\$97 B, 25%

• Other
\$41 B, 11%

Sources: Alzheimer's Association

Cost of care for individuals in the US with Alzheimer's Disease to Medicare and Medicaid from 2024 to 2050 (in billion US dollars)

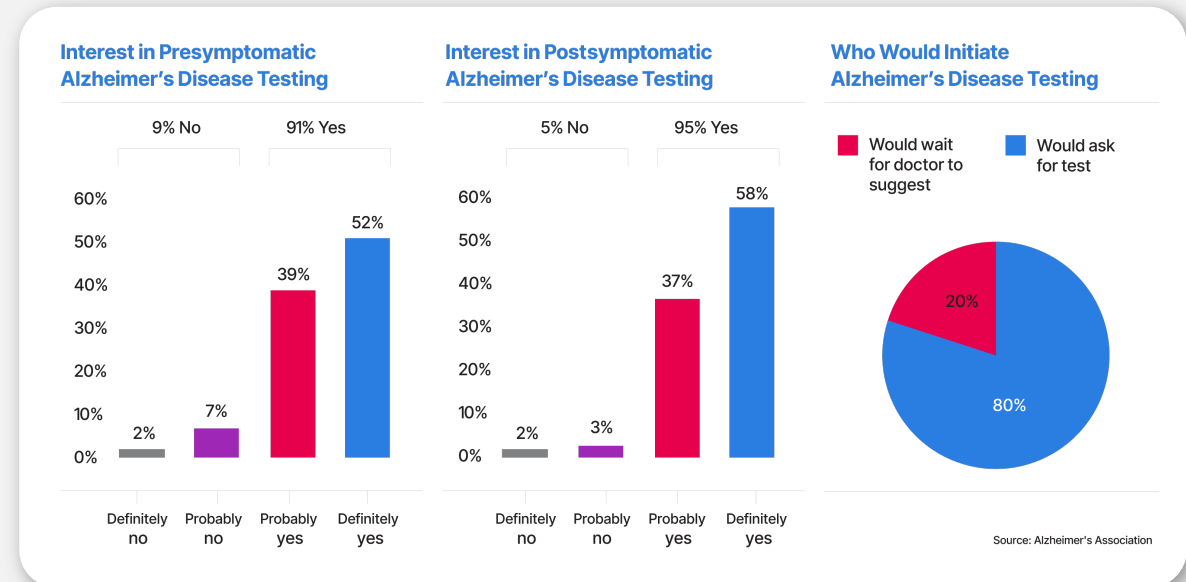
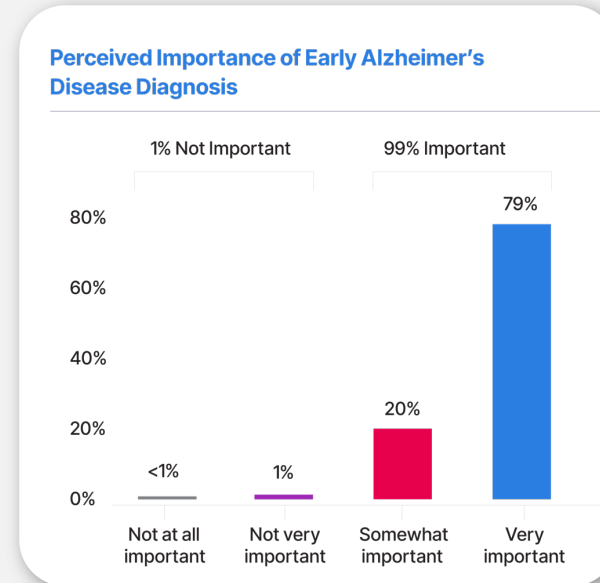


1. [AA Report, page 49.](#)
2. [AA Report, page 97.](#)
3. [AA Report, page 98.](#)



Risk Screening: Public Acceptance & Demand

- **91% of Americans would take a test before symptoms appear.**¹
- **80% would proactively request testing, not wait for a doctor.**¹
- **83% of diagnosed individuals would join a clinical trial.**²
- **\$8.3B Alzheimer's diagnostics market (2024), projected to reach \$15.5B by 2030 (CAGR 11%).**³



1. [AA Report, page 103.](#)
 2. [AA Report, page 104.](#)
 3. [Grand View Research – Alzheimer's Disease Diagnostics Market Summary.](#)

Risk Screening is Critical

ALZAI technology is designed to enable early detection of patients with Alzheimer's disease and at high-risk of developing disease, creating critical opportunities:

- ✔ To make a substantial difference in patient trajectories and outcomes.
- ✔ To avoid many cases of disease through preventative interventions.
- ✔ To make the clinical workflow more cost-effective for payors.
- ✔ To enable more efficient clinical trials for needed Alzheimer's drugs.
- ✔ To help patients make informed decisions about medical, financial and legal matters.

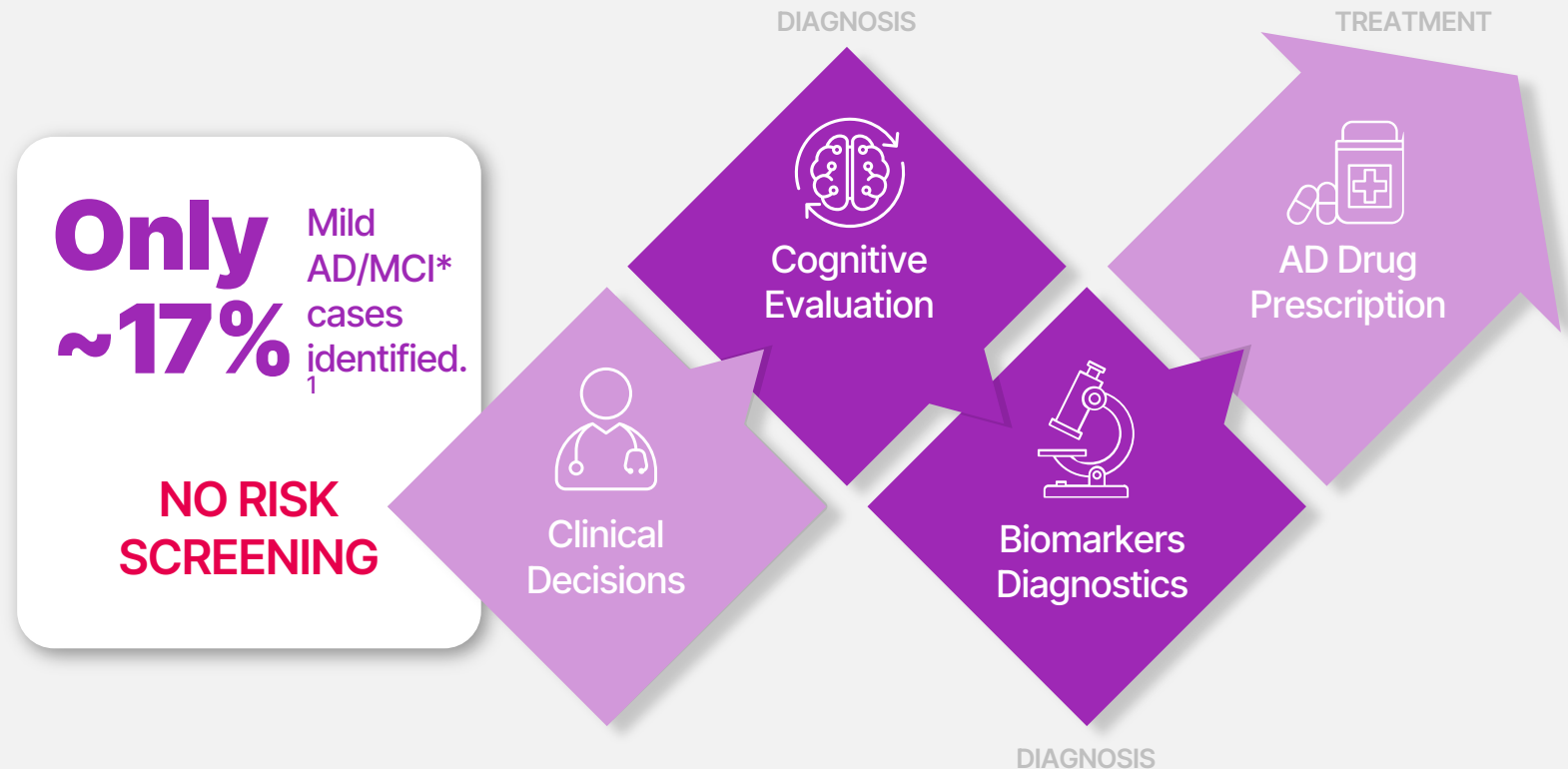


The Problem With Current Methodology

Early-Stage Alzheimer's Disease (AD) remains widely undiagnosed due to the needs of risk screening, delaying intervention and treatment.

SCREENING TODAY RELIES ON PHYSICIAN SUSPICION

- **No systematic screening:** early intervention is rare, treatment delayed, and prevention for the at-risk is not addressed
- **Current methods (MRI, CSF protein tests):** costly, invasive, slow, and unsuitable for population-scale risk-screening.²



1. [AA Report, page 32.](#)
 2. [Nature - Early detection of dementia through retinal imaging and trustworthy AI - Jinkui Hao, William R. Kwapong, Ting Shen, Huazhu Fu, Yanwu Xu, Qinkang Lu, Shouyue Liu, Jiong Zhang, Yonghuai Liu, Yifan Zhao, Yalin Zheng, Alejandro F. Frangi, Shuting Zh](#)

*AD: Alzheimer's Disease
 MCI: Mild Cognitive Impairment

The Solution Now Available

ALZAI's AI-Powered Risk Screening for Alzheimer's Disease

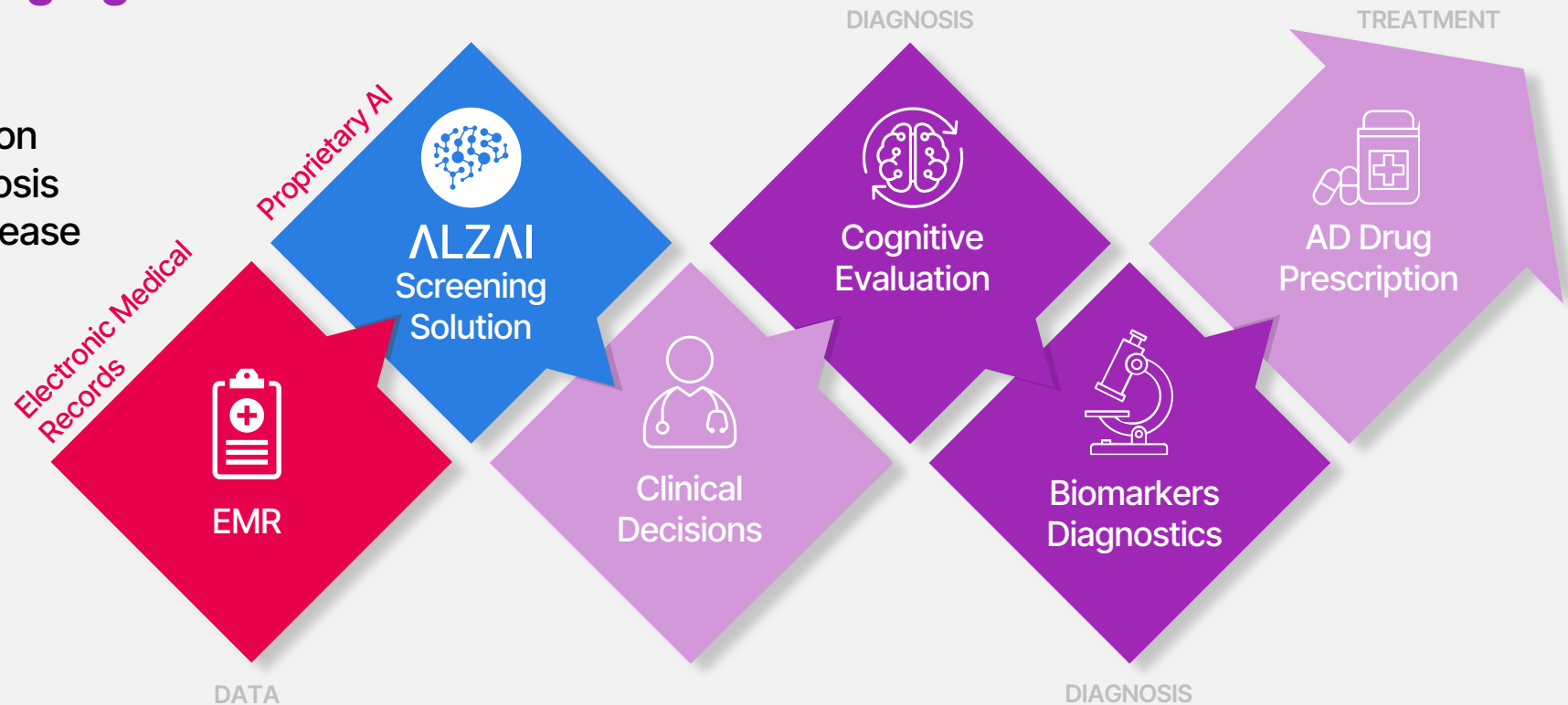
ALZAI uses existing **Electronic Medical Records (EMR)** and AI to automatically screen populations, identifying high-risk patients.

By providing valuable clinical decision support, ALZAI enables early diagnosis and treatment for those in early disease states, and preventative care for those at-risk.

80%

Mild AD/MCI* cases identified. ¹

With **Automated Risk Screening**



*AD: Alzheimer's Disease
MCI: Mild Cognitive Impairment

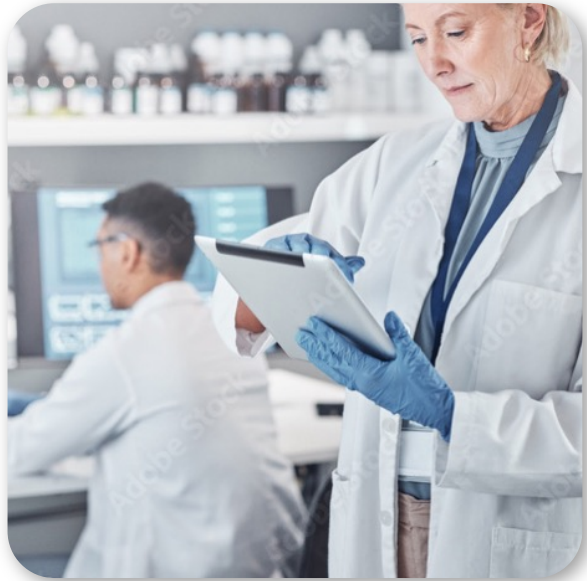
ALZAI Risk Assessment

- **Seamless & scalable:** Built on a user-friendly, easily integrated platform for healthcare providers, clinical researchers, and stakeholders.
- **EMR-ready:** Standard integration with electronic medical records.
- **Actionable insights:** Risk stratified by year and quantifiable by confidence.



Our Customers, Partners & Stakeholders

Primary Care Risk-Screening Market



**Population-level
Alzheimer's
risk-screening**

Identifying at-risk
individuals early
enables proactive
intervention and cost
savings

Large Health Systems & Institutions,
Lab Services and Insurance Companies

Recruitment Pre-Screening for Clinical Trials



**Reduces screening
failure rates
dramatically**

A major cost and time
bottleneck in Alzheimer's
Disease clinical trials

Accelerates recruitment
for therapeutic and
preventative clinical trials

Pharma Companies, Clinical Research
Organizations, Institutions & Sponsors

Primary Care Risk-Screening Market

For Healthcare Providers and Payors

Target Users



Large Health Systems & Institutions



Diagnostic & Lab Services (eg. Life Labs)



Insurance Companies
Risk assessment & early detection to lower costs.

Market & Business Model



Regulatory: Moderate burden, 510(k) Clinical Decision Support Tool, ~24-month timeline



Business Models: Pay-per-screen & annual licensing



Alzai designs solutions to level-up Alzheimer's Disease risk screening!

30%

Reduction in subjects developing AD with early intervention¹

30 to 40%

Slower Disease Progression with therapeutic intervention²

\$8.3B

AD Diagnostic Market (2024)³

\$7.9T

Global Savings if early detection for people alive in 2018⁴

11.03%

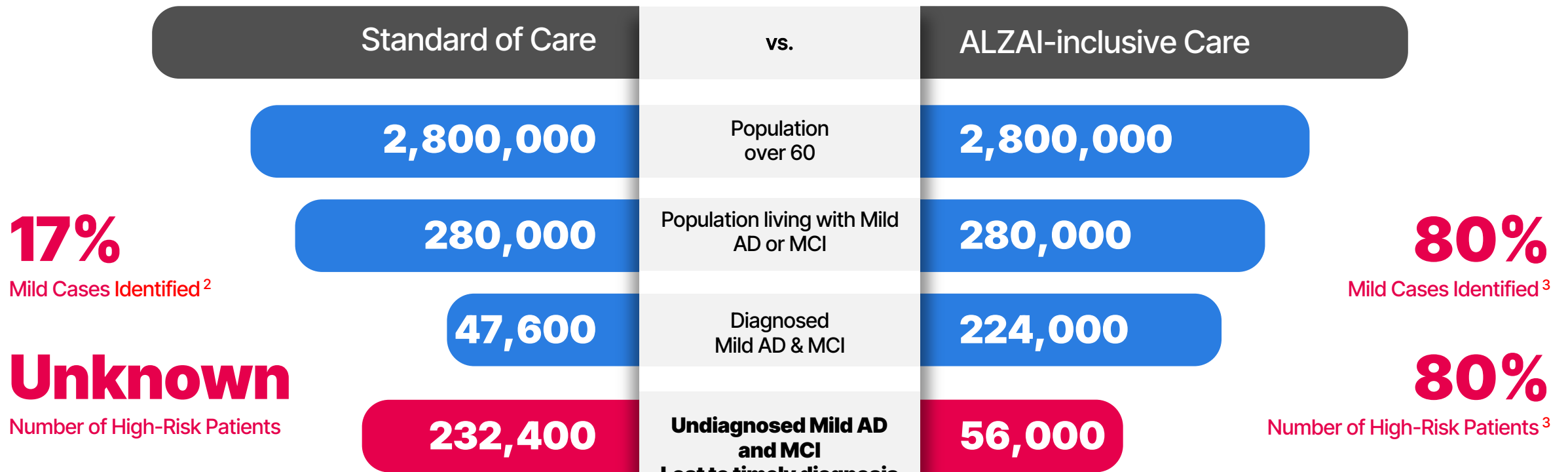
CAGR Growth (2025-2030)³

1. [Alzheimer's Research & Therapy volume 12, Article number: 81 \(2020\), Manuel Montero-Odasso, Zahinoor Ismail & Gill Livingston](#)
2. [New Alzheimer's drug slows cognitive decline by 35%, trial results show, May 2, 2023, The Guardian](#)
3. [Alzheimer's Disease Diagnostics Market Summary \(2025-2030\), Grandview Research](#)
4. [AA Report, page 98](#)

ALZAI Primary Care Risk-Screening Impact

Among an example 2.8M population over the age of 60 - 280,000 persons are living with Mild AD or MCI.

High-precision risk screening leading to diagnosis and treatment could save over \$64,000 per patient. Prevention can reduce Alzheimer's Disease cases by 30%.¹

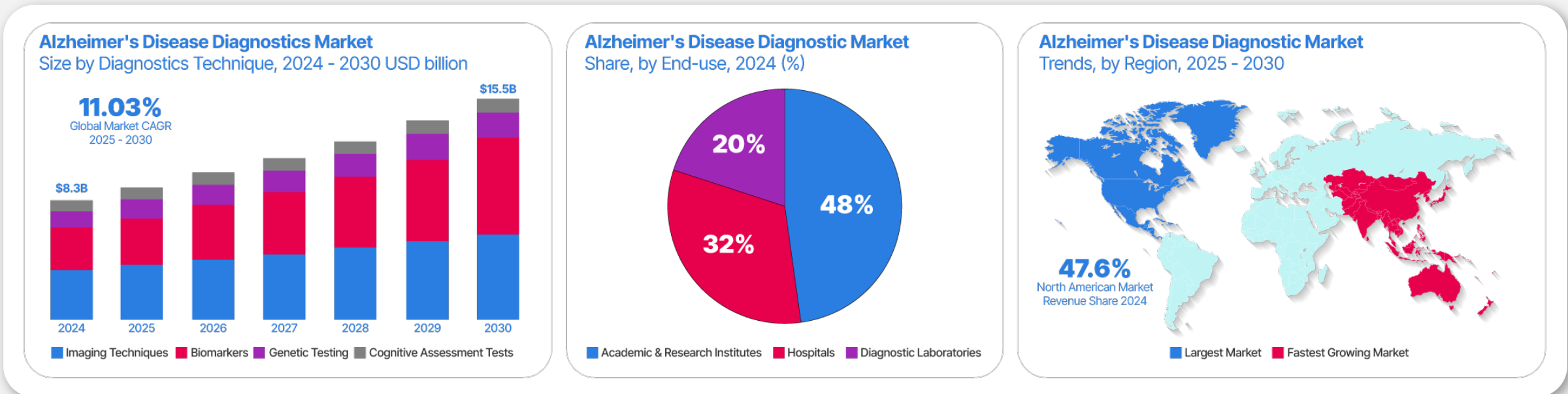


1. [Alzheimer's Research & Therapy volume 12, Article number: 81 \(2020\), Manuel Montero-Odasso, Zahinoor Ismail & Gill Livingston](#)
 2. [AA Report, page 32.](#)
 3. [Predicting onset and progression of neurodegenerative diseases using blood test data and machine learning models, Line 0273, Amir Glik, Chen Hajaj, Orit Rephaeli, Anat Goldstein](#)

Clinical Risk Screening: Upstream of a Growing Diagnostics Market

- **\$8.3B market (2024)**, projected to reach **\$15.5B by 2030** (CAGR 11%).¹
- **End-user share (2024):** Academic & research **48%**, Hospitals **32%**, Labs **20%**.¹
- **North America:** Largest market with **47.6%** share.¹

ALZAI is positioned as an upstream driver of the growing AD diagnostics market, flagging more patients earlier for clinical diagnosis.



1. [Alzheimer's Disease Diagnostics Market \(2025 - 2030\), Grand View Research](#)

Recruitment for Clinical Trials Market

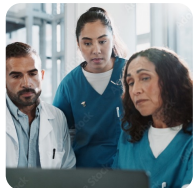
For Clinical Trial Sponsors, Researchers and Service Companies

Addresses a key need in Alzheimer's drug development, optimizing clinical trial efficiency and reduces costs.

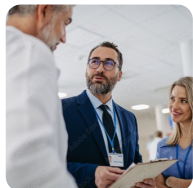
Target Users



Pharmaceutical Companies
Enhance drug development efficiency and success rates

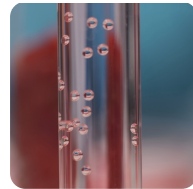


Clinical Research Organizations (CROs)
Streamline patient recruitment and optimization



Research Institutions & Sponsors
Improves trial design and participant selection

Market & Business Model



Regulatory: No significant burden, FDA 510(k) not required for implementation



Revenue Model: Licensing ALZAI solutions plus professional services for data integration and tuning



Immediate Commercialization
Ready for product development without lengthy approval processes

\$5.6B Estimated investment in AD drug development programs.¹

\$8-12k Cost per screening, Risk, Expense, and Delay-to-market.²

~2.5 yrs Timeline for trial recruitment.³

187+ Ongoing AD trials as of 2023 with more in pre-clinical phases.⁴

141 Assessed drugs for the treatment of AD.⁵

1. National Library of Medicine: <https://pubmed.ncbi.nlm.nih.gov/articles/PMC6118094/>

2. Source: Grandview Research: <https://www.grandviewresearch.com/industry-analysis/alzheimers-disease-diagnostics-market-report>

3. [Key Barriers for Clinical Trials for Alzheimer's Disease - Dana Goldman, PhD, Kristina Malzbender, BS, Lisette Lavin-Mena, MS, Lynne Hughes, PhD, Niranjan Bose, PhD, and Deep Patel, MA](#)

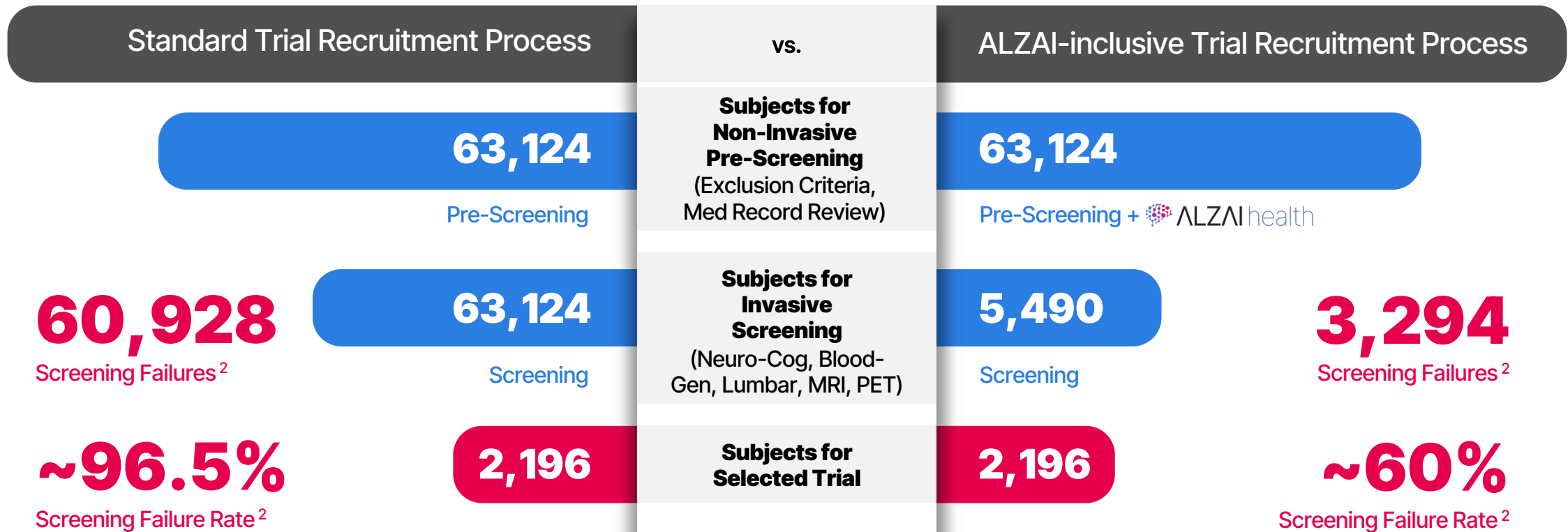
4. [Alzheimer's disease drug development pipeline: 2023, Jeffrey Cummings, Yadi Zhou, Garam Lee, Kate Zhong, Jorge Fonseca, Feixiong Cheng](#)

5. National Library of Medicine: <http://pubmed.ncbi.nlm.nih.gov/articles/PMC10210334/>

ALZAI Risk-Screening for Clinical Trial Impact

Clinical trial sponsors, Clinical Research Organizations (CROs) and service companies

High-precision pre-screening for risk may reduce screened subjects by up to 57,634, cutting the cost by \$30-\$40M, by lowering screen failure rates, which accelerates recruitment enabling faster trials. ¹



1. [Key Barriers for Clinical Trials for Alzheimer's Disease - Dana Goldman, PhD, Kristina Malzbender, BS, Lisette Lavin-Mena, MS, Lynne Hughes, PhD, Niranjan Bose, PhD, and Deep Patel, MA](#)
 2. [Alzheimers Dement. 2025 Sep 16; Donanemab in preclinical Alzheimer's disease: Screening and baseline data from TRAILBLAZER-ALZ 3](#)



Company Status

Proof-of-Concept is Established; Alzai is Commercial-Ready



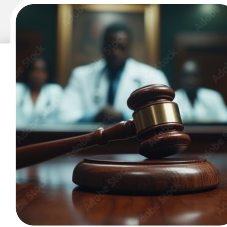
Advanced Learning & Data Foundation

Machine learning on EMR data from Clalit Health Services: 500,000 diverse real-world patients.



Proven Predictive Accuracy

Identifies 80% of at-risk patients up to 10 years before diagnosis, stratified by year; non-invasive and cost-effective.



Intellectual Property & Legal Standing

ALZAI has a strong IP strategy with a filed PCT, securing legal protection. Continuous expansion reinforces exclusivity and ensures ongoing innovation in AI-driven screening.



Market Readiness & Customization

Validated, customizable solution adaptable to global healthcare providers, payors, and clinical trials.



Intellectual Property

ALZAI's Strong Intellectual Property Foundation

ALZAI holds exclusive rights to all intellectual property generated through its research and innovation:

-  Original Research IP: The foundation of ALZAI's technology
-  New IP Developed by ALZAI: Innovations emerging from ongoing research and development
-  IP from Future Research: Any advancements based on the original IP remain under ALZAI's ownership

ALZAI's intellectual property has been rigorously assessed by top legal experts, ensuring a strong legal position:

-  Ehrlich Law (Israel's Leading IP Firm): Created ALZAI's PCT* and confirmed no prior art
-  Calyx Law (California-based IP Specialists): Reviewed IP landscape, confirming ALZAI's strong legal position

*Patent Cooperation Treaty (PCT) makes it possible to seek patent protection for an invention simultaneously in each of a large number of countries by filing an "international" patent application.

ALZAI History & Trajectory

Building the Company to deliver value for all stakeholders; patients, clients, and investors

Y 2021-2023

Initiate research and initial results on small-scale

H1 2024

Large scale research study achieved success

Patent Filed

H2 2024

Incorporation

Founders Pre-Seed Investment

IP Landscape Review Positive

Q1 2025

Definitive IP Licensing Agreement signed

\$800K CAD Seed Investment

Core Product Development Initiated

Q2 2025

Raised additional \$1.75M CAD prior to go public

Advisory Board Secured

Marketing Launch

Major Pharma Interest in ALZAI Program

AI Engineering Team Recruited

Q3 2025

Board of Directors Appointed

Presented ALZAI paper at Alzheimer's Association Conf

Market interest secured from Healthcare, Insurance

Market interest secured from CROs (clinical trials)

Q4 2025

Go public event (year end or Q1, 2026)

Commercial interest defined by Healthcare, Insurance and CRO companies

Agreement signed with large pharmaceutical company for paid research

Sign US Data Supplier

R&D Expands ALZAI models for different AD use cases

H1 2026

PoC with US clients completed

Implementing a paid research project with a pharmaceutical partner

Term Sheets signed with channel partners in 1 to 2 markets

Exploring new products that use related ML predictive technologies

Develop more models utilizing additional information from US data

H2 2026

Pilot with first US client(s) following PoC

Contract with first Pharma for use in clinical trials

Establish Channel Partnerships for multiple markets (e.g. Payor, Healthcare IT, Clinical Trials, US, Canada, Israel)

Enter the Longevity Market

Y 2027

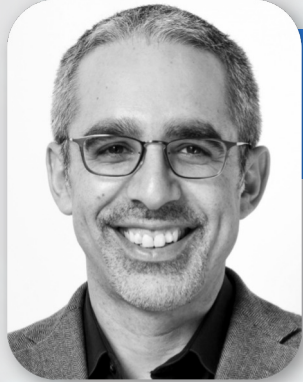
Contract on successful Pilot completion with US client

Deployment as tool for recruitment in clinical trial

New clients secured via channel partners

Expand with new related products for risk screening

Management & Team



Hayim Raclaw

Chairperson, Chief Executive Officer & Co-founder

An experienced founder and executive with 25 years in medical technologies, including imaging, diagnostics, surgery, mental health, and venture capital. Proven track record of creating value through strategic leadership.



Roy Kait

Director, Chief Revenue Officer & Co-founder

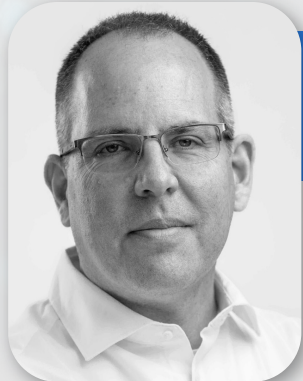
Over 15 years in startups, finance, and strategy across Israel, Europe, the US, Canada, and LATAM, including M&A leadership at IMC (NASDAQ: IMCC, CSE: IMCC) with \$180M+ in transactions. Reserve pilot in the Israeli Air Force.



Dr. Amir Glik, MD

Director, Chief Medical Officer & Co-founder

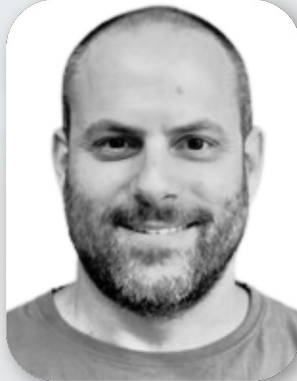
Senior Neurologist at Clalit Health Services in Israel and Head of the Cognitive Neurology Service at Beilinson Hospital, Rabin Medical Center, part of the Clalit network. Holds multiple registered patents across various research projects in cognitive neurology.



Israel Messer

CFO

Over 15 years as a Group CFO in private and public companies (TASE: GIX), including oversight of U.S., UK, and South American subsidiaries. Experienced across Marketing/Internet, SaaS, and Medical Devices, with a strong track record in IPOs and M&A.



Boaz Citrin

Senior Director of Research & Development

Brings over two decades of R&D leadership, building AI-driven healthcare products and data platforms that turn advanced technology into scalable, high-impact solutions.

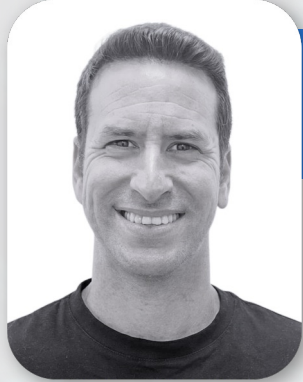


Erin Sharoni

Director of Commercial Partnerships

Seasoned biotech executive and Harvard-trained bioethicist, 15+ years across science, AI and business, successfully leading multiple health and longevity ventures to IPO, advancing ALZAI's predictive neuroscience mission.

Management & Team



Ofri Kait
Director Business Development
& Operations

A decade of experience in venture creation, business development, operations, and investments across digital health, proptech, agritech and deep-tech, with a strong track record in strategic growth, marketing, partnerships, and commercialization.



Jenny Greer
Executive Assistant

A highly accomplished Executive Assistant, with 15 years experience in team leadership and operations management, 10 years as an EA specializing in the fields of accounting, finance, and health tech.



Prof. Chen Hajaj
Head of Data Science

Founder of the Data Science and AI Research Center and faculty member in the Department of Industrial Engineering and Management at Ariel University. A recognized expert in machine learning, with extensive research and applied AI experience.



Dr. Anat Goldstein
AI Expert

Faculty member and Head of the Data Science M.Sc. Program at Ariel University, specializing in machine learning and artificial intelligence with extensive academic and applied experience.



Gal Aviram
Senior Data Scientist

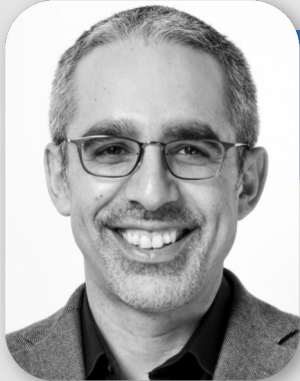
A medical data scientist specializing in AI-driven early-detection algorithms, integrating machine-learning pipelines with medical analytics. Brings a neuroscience background and experience leading computational product development in startups.



Marianna Abajyan
Data Analyst

Marianna holds a B.Sc. in Digital Medical Technologies (cum laude) from HIT and works as a data analyst specializing in medical data and healthcare insights. She also volunteers at the Pediatric Emergency Medicine Unit at Dana-Dwek Children's Hospital.

Board of Directors



Hayim Raclaw
Chairperson, Chief Executive
Officer & Co-founder

An experienced founder and executive with 25 years in medical technologies, including imaging, diagnostics, surgery, mental health, and venture capital. Proven track record of creating value through strategic leadership.



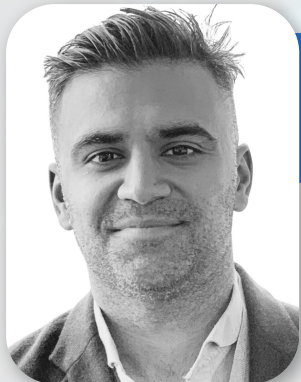
Roy Kait
Director, Chief Revenue Officer
& Co-founder

Over 15 years in startups, finance, and strategy across Israel, Europe, the US, Canada, and LATAM, including M&A leadership at IMC (NASDAQ: IMCC, CSE: IMCC) with \$180M+ in transactions. Reserve pilot in the Israeli Air Force.



Dr. Amir Glik, MD
Director, Chief Medical Officer
& Co-founder

Senior Neurologist at Clalit Health Services in Israel and Head of the Cognitive Neurology Service at Beilinson Hospital, Rabin Medical Center, part of the Clalit network. Holds multiple registered patents across various research projects in cognitive neurology.



Faizaan Lalani
Director

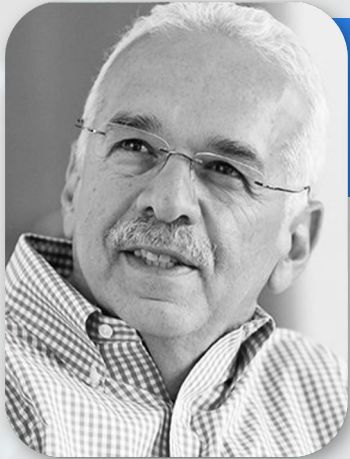
An accounting and finance professional with over 7 years as a capital markets executive, assisting companies across various sectors with go-public transactions, leadership, governance and restructuring.



Mark Goldhar
Director

Seasoned financial and entrepreneurial leader with over 17 years of experience in business development, strategy, and corporate growth. Co-founder of 14 companies with five successful exits exceeding \$290M in total value.

Board of Advisors



Dr. Michael Greenberg, MD
Neurosurgeon, Entrepreneur, PubCo
CEO, Experienced company developer

Med-Tech CEO who led a medical imaging company to NASDAQ & TSX IPO before its \$500M acquisition by Merge Technologies. Co-founded Fio Corporation, pioneering Fionet for diagnostics. MD from UPenn, neurosurgery residency and NIH post-doc at UofT.



Prof. Lindsay A. Farrer, Ph.D.
Leading NIH-funded programs,
identified causal factors for AD

Chief of Biomedical Genetics at Boston University. Led NIH-funded research identifying genetic risk factors for Alzheimer's. PI of the Framingham Heart Study – Brain Aging Program. Authored 500+ publications. Ph.D. from Indiana University, post-doc at Yale.



Uri Bettesh
Founder & CEO of Datos, Patient
Engagement Platform for Healthcare

Founder & CEO of Datos, a leading patient engagement platform used by Kaiser Permanente and Mayo Clinic. Former GM at NCR and VP at Retailix, with 18 years as a technology executive. BSc and Master's in Engineering from Technion.



Thank You

ALZAI Health Corp.
22 Adelaide St W #3400,
Toronto, ON M5H 4E3, Canada
Phone: +1 (416) 862 4351

info@alzaihealth.com
www.alzaihealth.com

ALZAI HEALTH CORPORATION | OCTOBER 2025



Predictive
Alzheimer's Risk
Screening through
the Power of AI